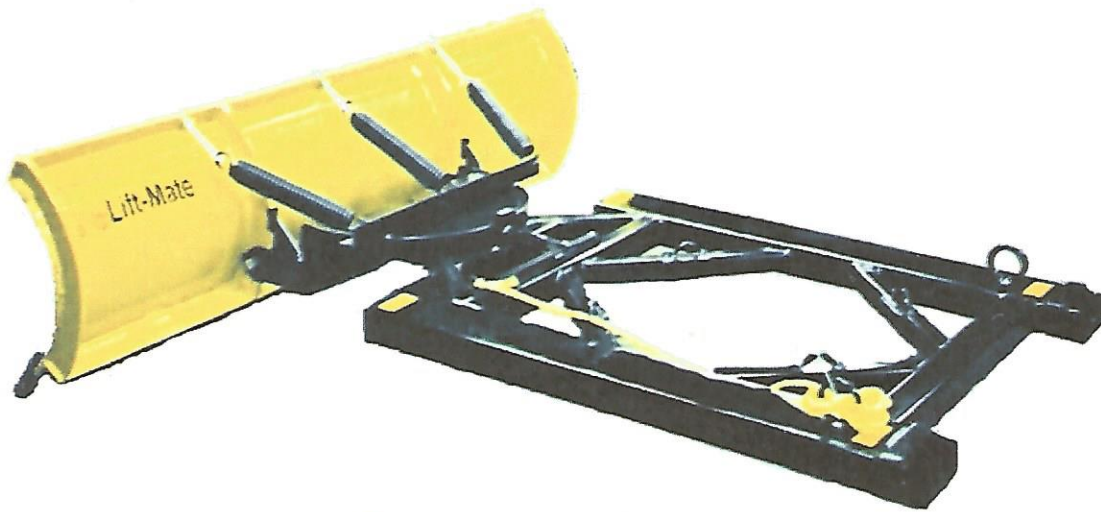


Lift-Mate™ Forklift Snowplow

Owner's Manual and
Illustrated Parts Manual



Lift-Mate™
FORKLIFT SNOWPLOWS
by SCHROCK METAL FAB, LLC
<http://www.liftmatesnowplows.com>
The Practical Solution To Your Winter Problems

Schrock Metal Fab, LLC

12647 York Ln.

Middlebury, IN 46540

(574) 596-9466

liftmate@liftmatesnowplows.com

<http://www.liftmatesnowplows.com>

Congratulations....

And welcome to the growing family of Lift-Mate™ forklift snowplow owners.

Now that you have chosen the “practical winter solution,” please take a moment to read through this manual so that you can better, and more safely, operate your new Lift-Mate™ forklift snowplow. Because we want you to fully enjoy our revolutionary product for many years to come, we urge you to read this manual carefully.

Your Lift-Mate™ forklift snowplow has been meticulously crafted to stand up to winter's worst weather. We are confident that there is nothing on the market today that comes close to what we offer, in terms of features and design. Lift-Mate forklift snowplows give you top-notch performance and save you money over the course of your investment. We have worked overtime to provide you with the highest quality and most reliable forklift snowplow.

In this manual, you will find:

- 1) Instructions for safe use;
- 2) Product maintenance information;
- 3) Diagram and parts list; and
- 4) Warranty information.

Thank you for your business!

Samuel T. Schrock
President, Schrock Metal Fab LLC
liftmate@liftmatesnowplows.com

1) Instructions for Safe Use

Note: OSHA regulations (1910.178(a)4) require that fork truck manufacturers are to be consulted when accessories are used that affect the truck's capacity and safe operation.

Installation Instructions

- 1) With unit on the floor, lower forks of the lift truck, aligning them with the fork pockets of the snowplow.
- 2) Slowly move the lift truck forward until the forks are fully inserted into the pockets. *Because the plow is designed to be pushed from the plow carriage, it is important that the back of the snowplow rack rests against it.*
- 3) Secure the snowplow to the lift truck by looping the chain (included) around the fork carriage and fastening it back to itself on the loop. (See illustration #1 below)
- 4) If using a counterweight, place the empty container onto the rack in the space provided, secure to the tie loop on the fork rack, and fill with sand or salt. Containers are available for purchase from Schrock Metal Fab; alternatively, it is designed to accommodate 55 gallon drum containers.



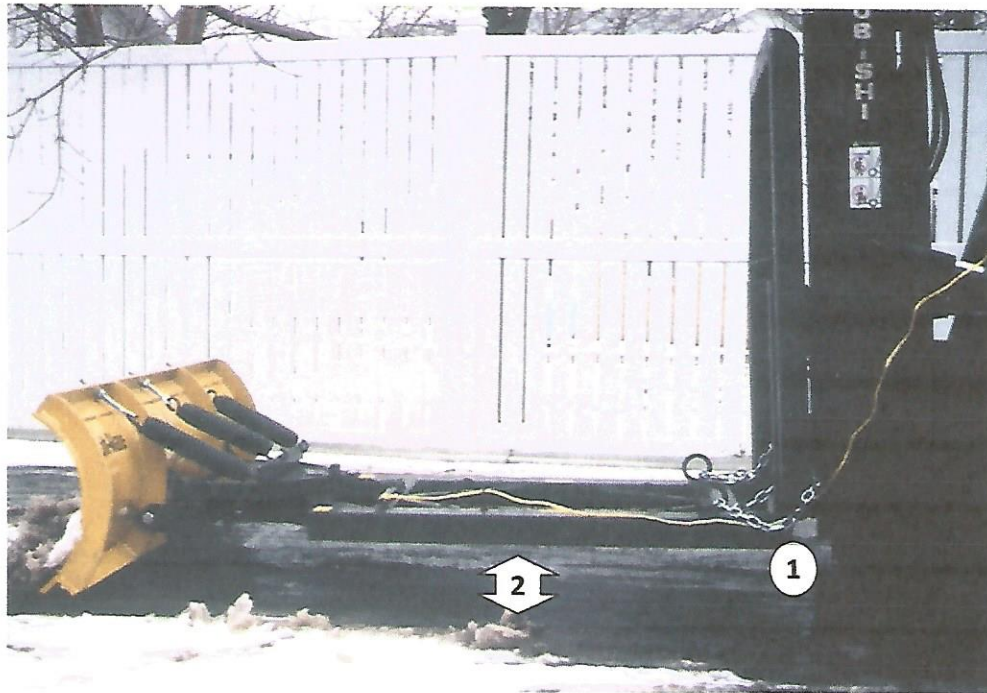
Caution: Please make sure that the counterweight is **securely fastened** to the fork rack before use. Failure to do so may cause the plow to become unstable.

Operating Instructions

Note: Please ensure that all personnel using the Lift-Mate™ forklift snowplow have proper forklift training and required certifications.

- **Angling:** One of the innovative features of the Lift-Mate™ forklift snowplow is its ability to be used at five different angles – 0° (straight), 24° left or right, and 47° left or right. To angle the snowplow:
 - **Lower** the snowplow so that the blade is resting on the paved surface;
 - **Pull and hold** the yellow rope to release the locking pin;
 - **Turn** the lift truck wheels and move (forward or backward) slowly until the desired angle is achieved; and then

- **Release** the rope to lock the locking pin, making sure that the pin finds one of five slots.



- **Keep the fork tubes parallel** with the surface you are plowing (*Illustration #2 above*). Failure to do so will result in uneven wear of the cutting edge.
- **Use caution when operating the snowplow**, which means:
 - Avoiding excessive speed;
 - Taking care to avoid obstacles that could be damaged by impact with the plow; and
 - Watching for rough or uneven surfaces.

IMPORTANT!!!

Please note that this snowplow is designed exclusively for the purpose of snow removal on paved surfaces (i.e., asphalt or concrete). This means that it should not be used for:

- Moving items other than snow, such as sand, gravel, or trash; or
- Plowing non-paved surfaces, such as stone, gravel or grass.

2) Product Maintenance

The Lift-Mate™ forklift snowplow was designed to be hassle-free and require very little maintenance. However, we would like to point out a couple of maintenance steps that will ensure the functionality of your snowplow for years to come.

- **Sheared locking pin replacement:**

The most common maintenance step that you will need to do is to replace sheared locking pins. The locking pin was designed as a safety feature to prevent damage to the plow or to property in the case of impact. A few symptoms you may notice if you have a sheared locking pin:

- Angling mechanism fails to react to the trip rope.
- Sudden loss of control of the moleboard angle.

To replace the locking pin, complete the following steps:

- 1) Elevate and support the plow.
- 2) With the moleboard in a straight position, remove the ¼-20-1¼ bolt from the rear of the pin.
- 3) Slide the sheared pin forward to the square hole in the top of the rotating board and remove, taking care not to pinch the locking pin spring between the pin housing and the rotating board.
- 4) Insert the new locking pin and reverse steps 3 and 2 above.

Replacement locking pins and pin springs can be ordered through your Lift-Mate™ distributor, or directly from us via email at *Sam* @liftmatesnowplows.com.

- **Greasing zerks:**

A grease zerk can be found on the pivot point between the rotating board and the fork rack. Add two or three pumps of grease at the beginning of each plowing season to enhance performance. This zerk can be accessed from the side, with the plow supported in an elevated position. A second zerk is located on the top of the locking pin housing and should only be greased during locking pin replacement.

Note: excessive greasing may cause the locking pin to become sluggish during extreme cold weather conditions.

- **Cutting edge replacement:**

The cutting edge, made with ½" hardened steel, is highly durable and an integral part of the plow's design. However, with extended use and contact with hard surfaces, the plow's cutting edge will eventually wear down. We recommend replacement when the cutting edge wears to the edge of the moleboard.

(Cutting edge replacement, cont.)

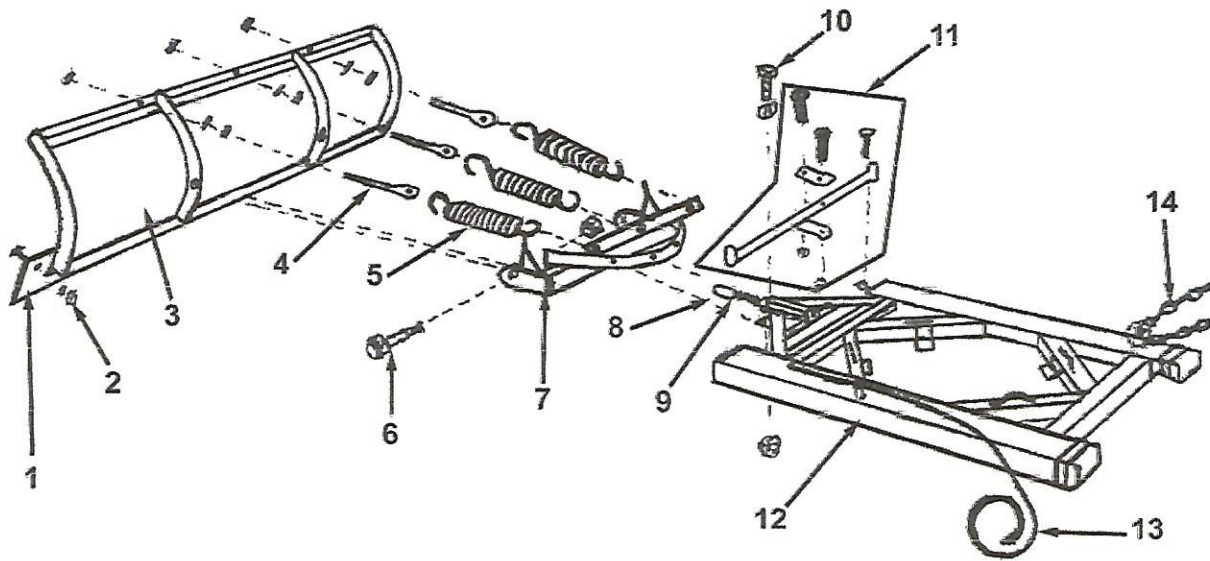
To replace, support the snowplow in an elevated position, and remove the $\frac{3}{4}$ -10-2 $\frac{1}{2}$ bolts (7 for 6' models, 9 for 7' models) connecting the cutting edge to the moleboard, and replace with a new one available from your Lift-Mate™ distributor.



Caution: Cutting edges are **extremely heavy** – for this reason, they should not be replaced by a single person. Seek assistance when replacing to avoid potential injuries.

- **Other replacement parts**, such as trip springs, are available through your distributor or directly from Schrock Metal Fab. Consult the parts list on page 6 when ordering parts.

3) Diagram and Parts List



Item #	Part #	Description
1	LMP-1A LMP-1B	Cutting edge, 6' (636/638 models) Cutting edge, 7' (736/738 models)
2	LMP-2	Carriage bolts (w/ nut & lock washer, size $\frac{3}{4}$ - 10 x 2 $\frac{1}{2}$, qty 7 (6' models), qty 9 (7' models))
3	LMP-3A LMP-3B	Moleboard, 6' (636/638) Moleboard, 7' (736/738)
4	LMP-4	Trip spring attaching bolt (qty 3)
5	LMP-5	Trip spring (qty 3)
6	LMP-6	Pivot bolt (w/ nylock nut, size $\frac{3}{4}$ - 10 x 2 $\frac{1}{2}$, qty 2)
7	LMP-7	Rotating board
8	LMP-8	Pivot shear pin
9	LMP-9	Pivot locking pin spring
10	LMP-10	Rotating board pivot bolt (size $\frac{3}{4}$ - 10 x 5 $\frac{1}{2}$)
11	LMP-11	Release lever assembly
12	LMP-12A LMP-12B	Fork rack, 5 $\frac{1}{2}$ " tube width (636/736 models) Fork rack, 7 $\frac{1}{2}$ " tube width (638/738 models)
13	LMP-13	Release rope
14	LMP-14	Plow attaching chain
*	LMP-CW	Counterweight container (optional)

* Item not shown